

# 2nd Small Scale Hydroelectric Power Workshop (May 2012)



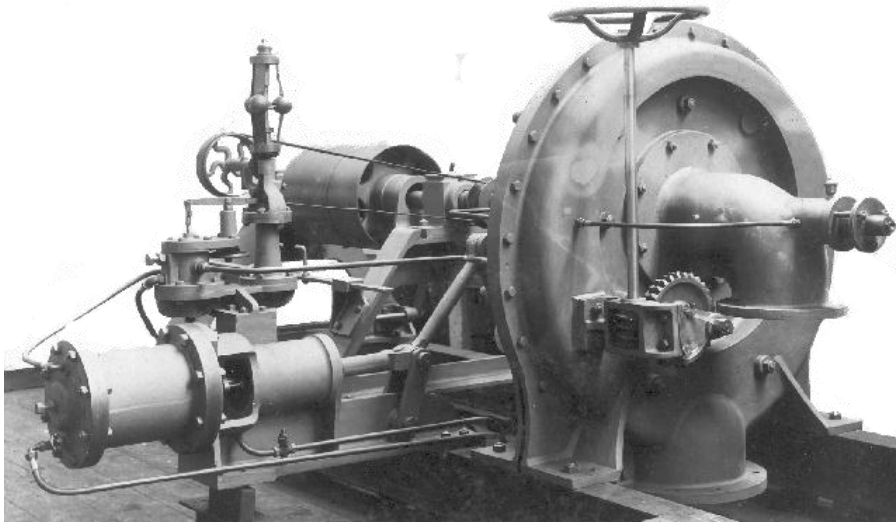
## GILKES TURGO & COMPACT TURGO TURBINES

May 2012

Pretoria, South Africa

# Gilkes Turgo

- First Turbine installed 1854 at Old Hutton, nr Kendal
- Installed turbine in 1881 at the Cragside estate, Northumberland. - First house in the UK to have electric light.
- Invented Turgo Turbine in 1919



## GILKES TODAY

- Currently working on new projects in Zimbabwe, Canada, Guatemala, New Zealand, Kenya, Sri Lanka, Western Samoa, and many sites in the UK
- Sizes ranging from 50kW to 15 MW
- Private land owners through to major Utility Companies.



# Gilkes Turgo

Gilkes invented the TURGO  
in 1919

Impulse machine

Head range from 50 - 300  
metres

Power output upto 10MW

Act as PRV's on WTP

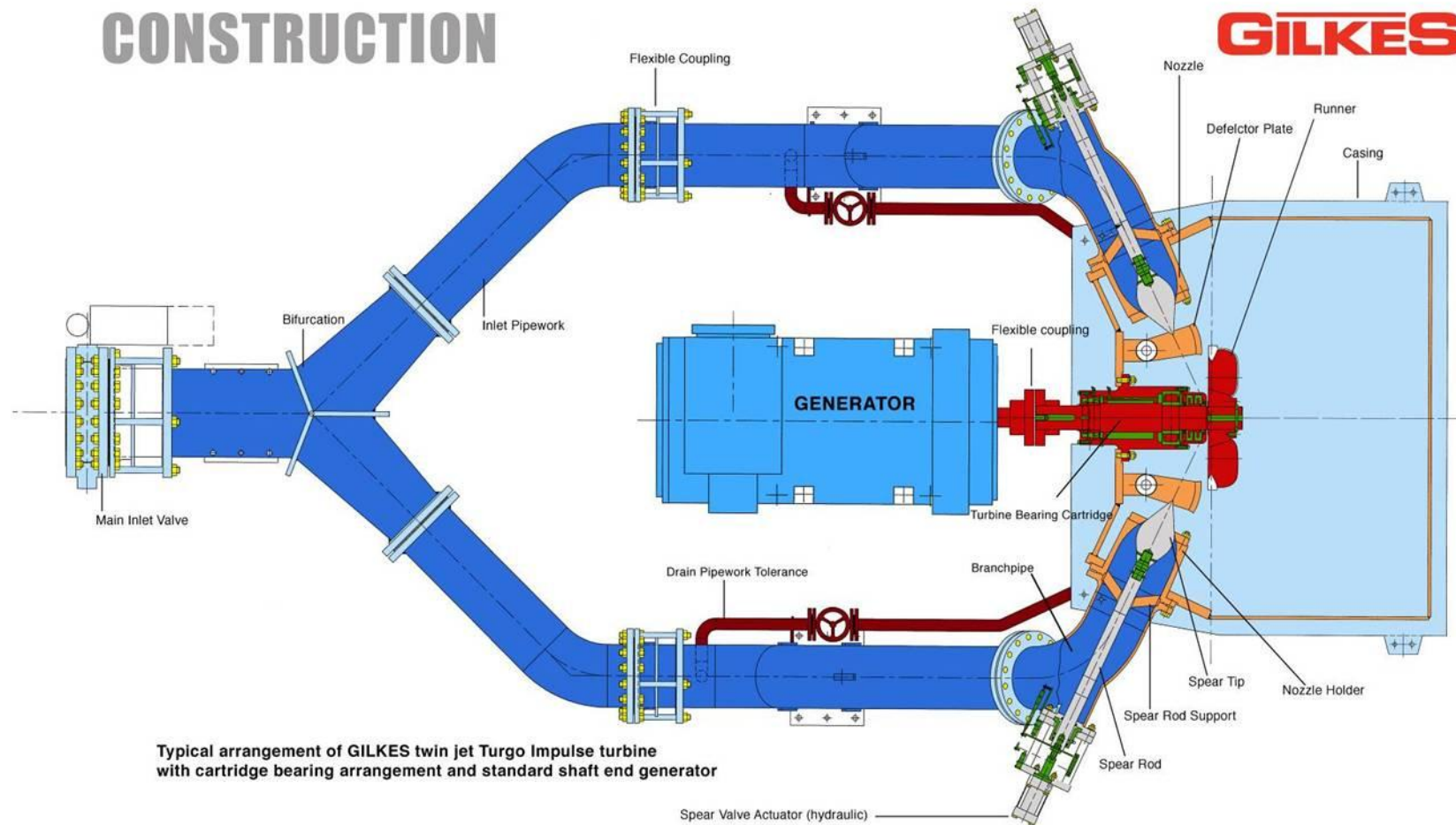


# Gilkes Turgo



# Gilkes Turgo

## CONSTRUCTION



# Compact Turgo

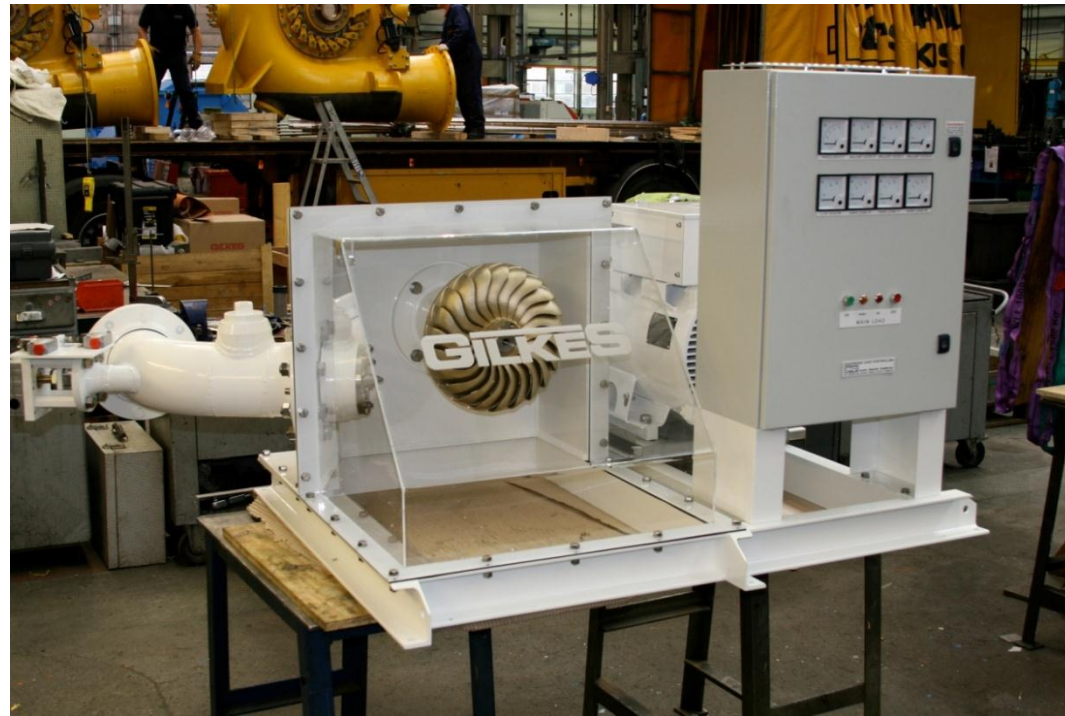
Designed by GILKES in 2005

Plug in and go

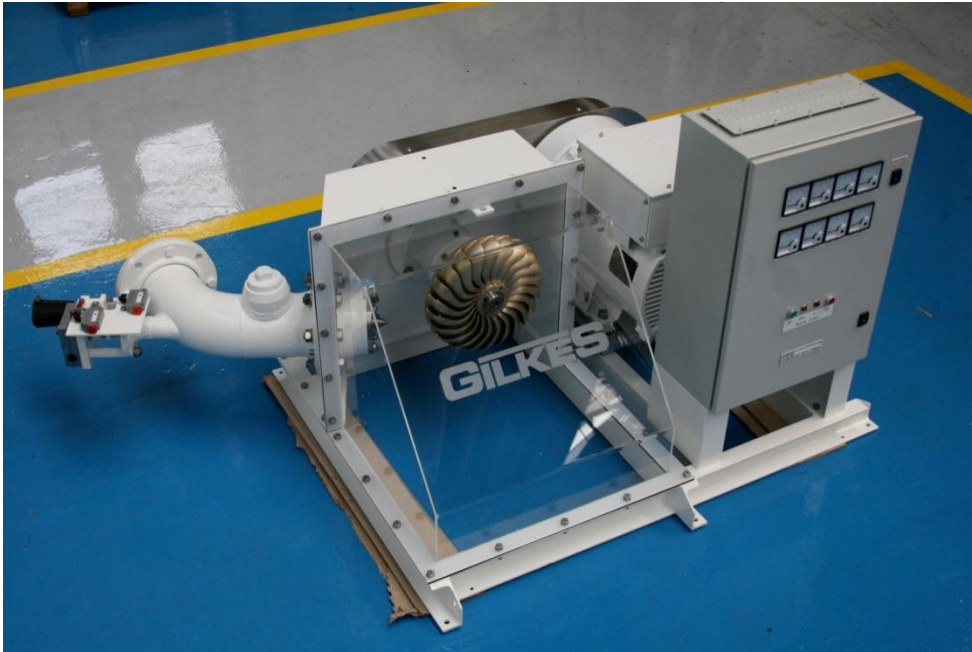
Head 40 – 150 metres

Flow 50 – 250 l/sec

Power output 30 – 200kW



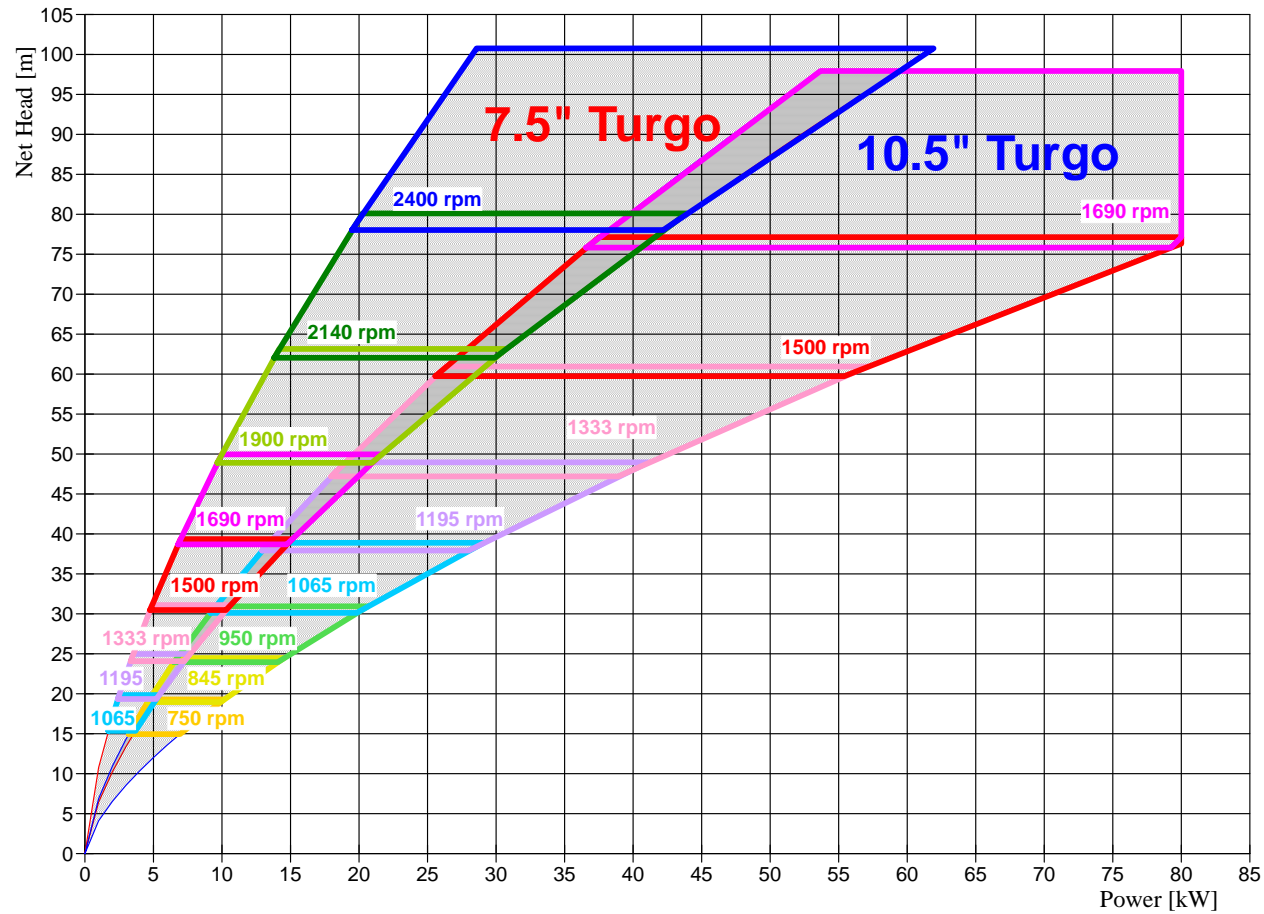
# Compact Turgo







# Compact Turgo graph

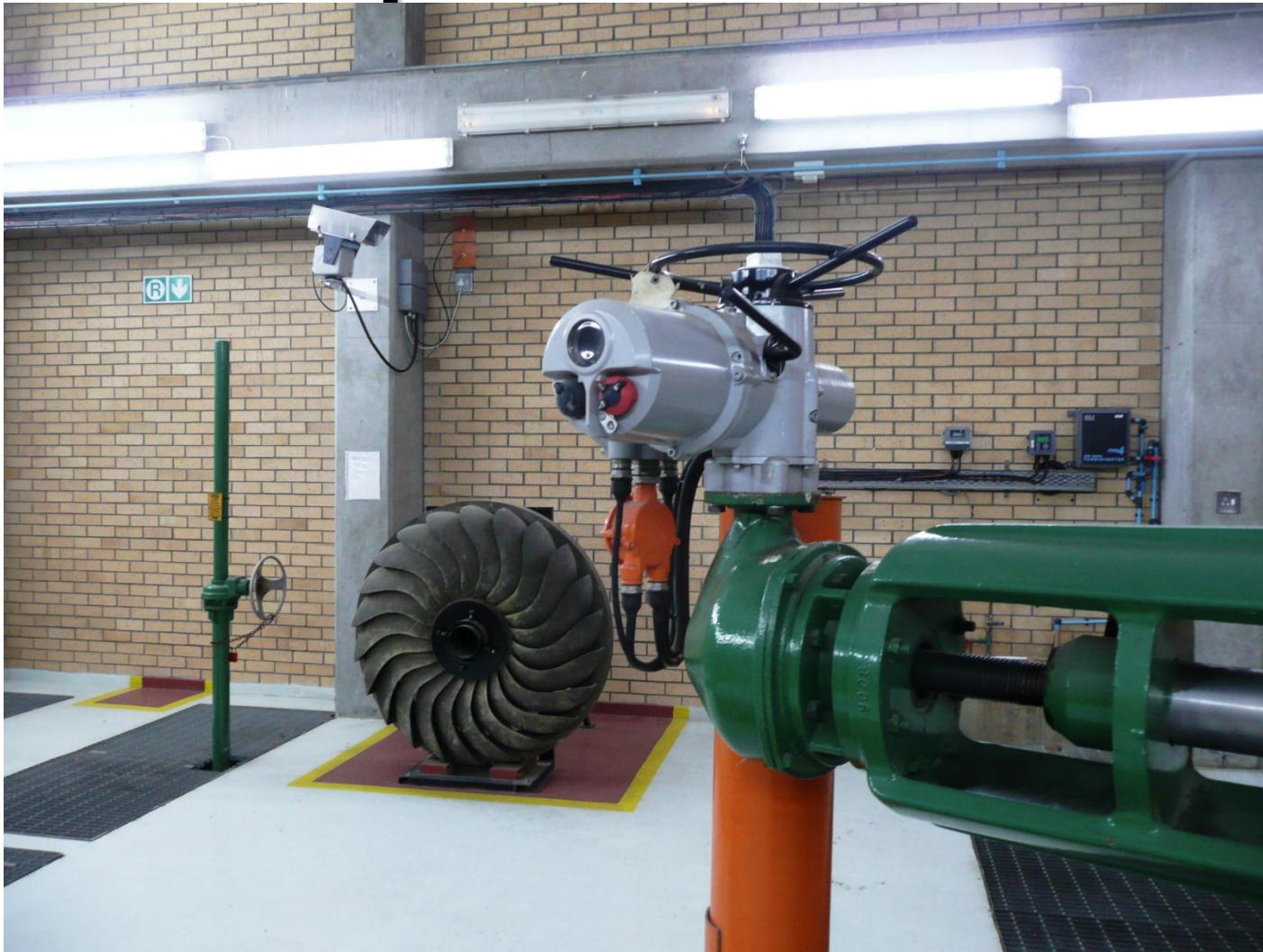


# Faure Turgo

Installed in 1991  
Power output 1.5MW



# Faure Turgo Spare runner



**Thank You**

**Baie dankie**

**29<sup>th</sup> MAY 2012**

**Andy Eaton**

**Gilbert Gilkes and Gordon Ltd**

**[a.eaton@gilkes.com](mailto:a.eaton@gilkes.com)**